



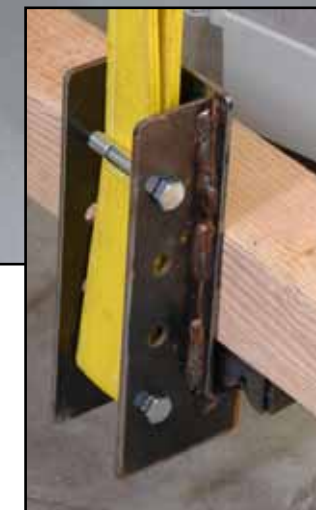
**Freightliner – Portland
Truck Manufacturing Fixtures Load Testing**

As part of Freightliner's quality control and engineering programs, proof load testing is performed to verify that fixtures and lifting devices perform as intended.

VGO performs a variety of load testing for a wide array of fixtures and lifting apparatuses. Prior to each test, loading plans and measurement metrics are established to ensure that the test data answers the particular engineering questions at hand.

Load is applied by several different means including dead weight, Instron load frames, hydraulic, pneumatic and other means as appropriate.

Common measurements include, load, elastic deflection, plastic deflection, deformation and other parameters.



Since 1970

"Serving the Engineering needs of the Pacific Northwest"